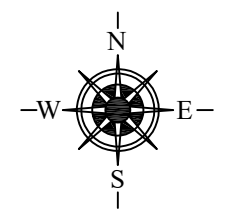
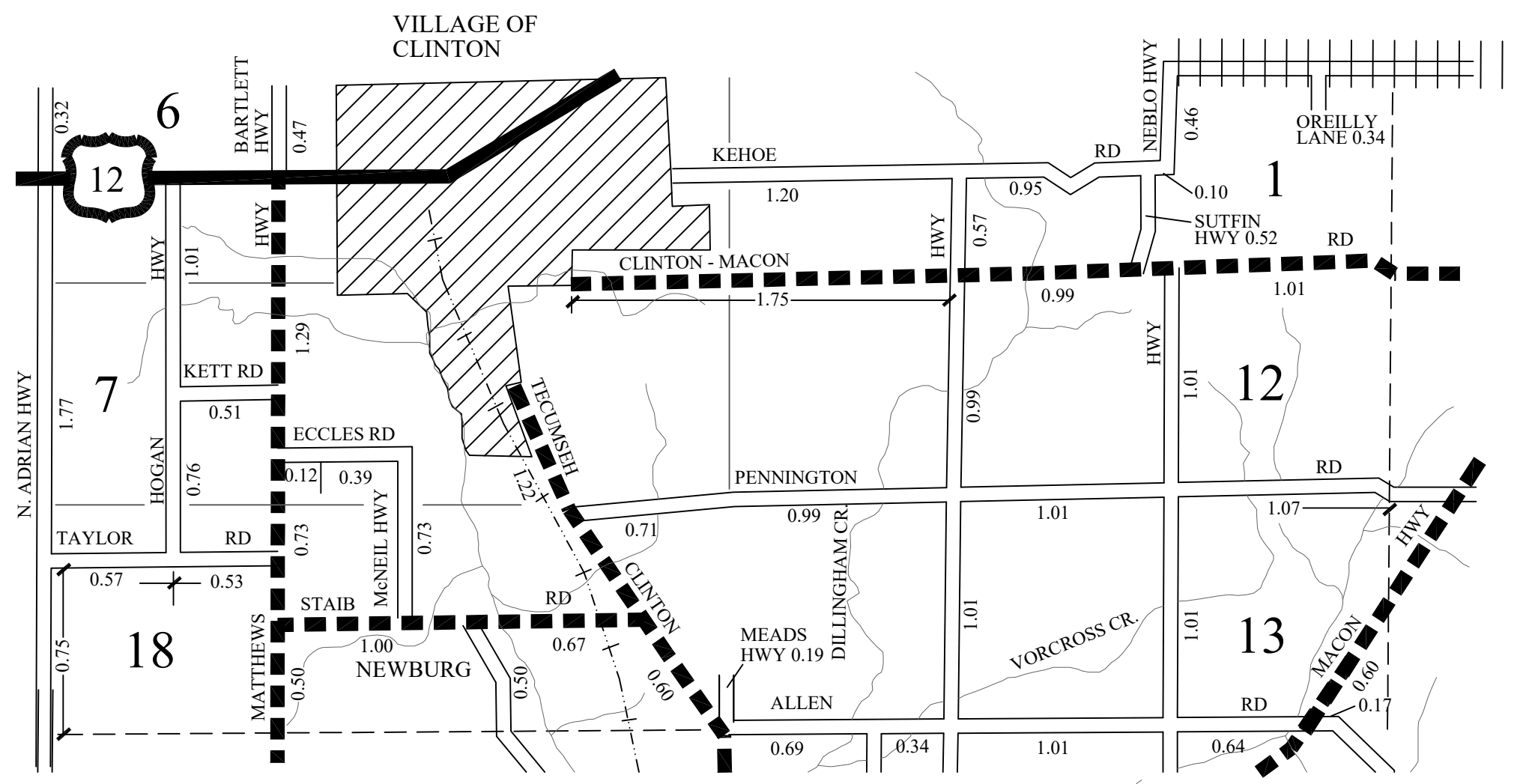


- COUNTY LINE
- CORPORATE LIMITS
- STATE TRUNKLINE
- COUNTY PRIMARY
- COUNTY LOCAL
- AJACENT COUNTY
- CITY OR VILLAGE STREETS

PRIMARY ROAD SYSTEM IS 10.36 MILES
 LOCAL ROAD SYSTEM IS 23.41 MILES

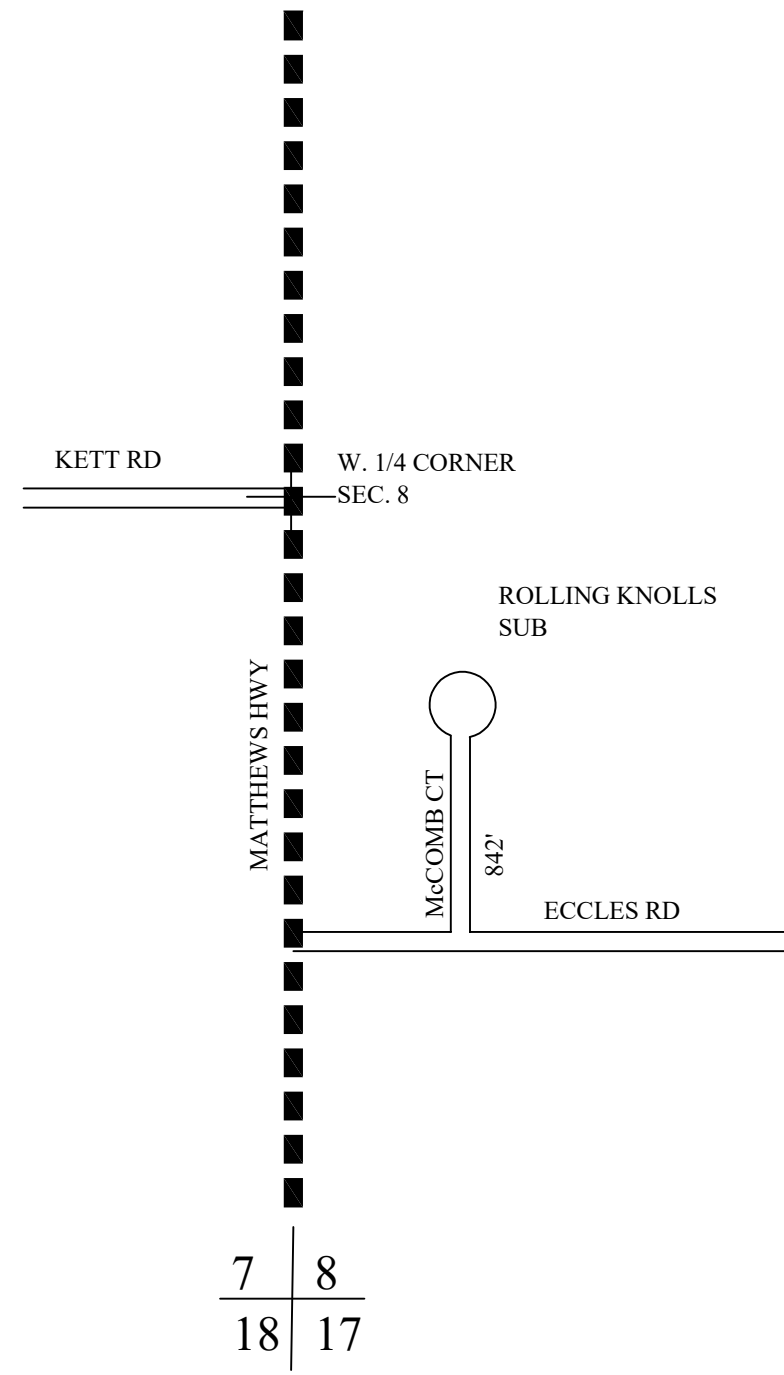
CLINTON TWP



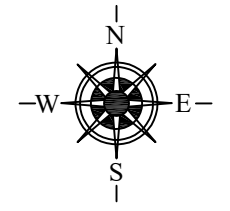
6	5
7	8

- COUNTY LINE
- CORPORATE LIMITS
- STATE TRUNKLINE
- COUNTY PRIMARY
- COUNTY LOCAL
- AJACENT COUNTY
- CITY OR VILLAGE STREETS

TOTAL FEET 842 EQUALS 0.16 MILES



7	8
18	17










TOWNSHIP CLINTON
 SECTION 8 T 5S R 4E
 COUNTY LENAWEE 46

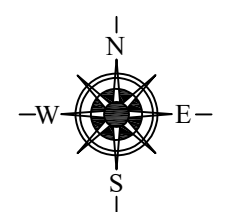
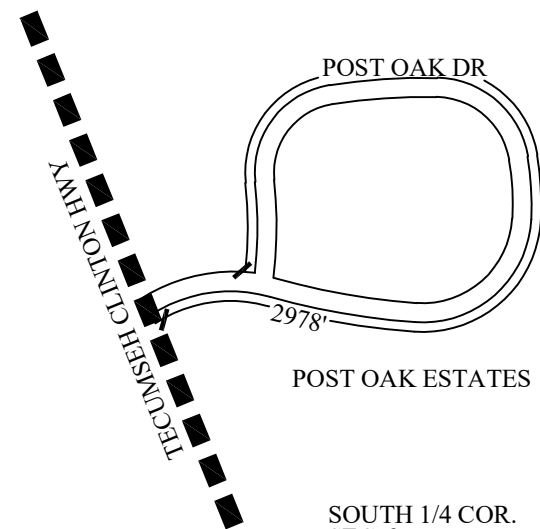
SHEET 28

5 | 4
8 | 9

NORTH 1/4 COR.
SEC. 9

- COUNTY LINE 
- CORPORATE LIMITS 
- STATE TRUNKLINE 
- COUNTY PRIMARY 
- COUNTY LOCAL 
- AJACENT COUNTY 
- CITY OR VILLAGE STREETS 

TOTAL FEET 2,978 EQUALS 0.56 MILES



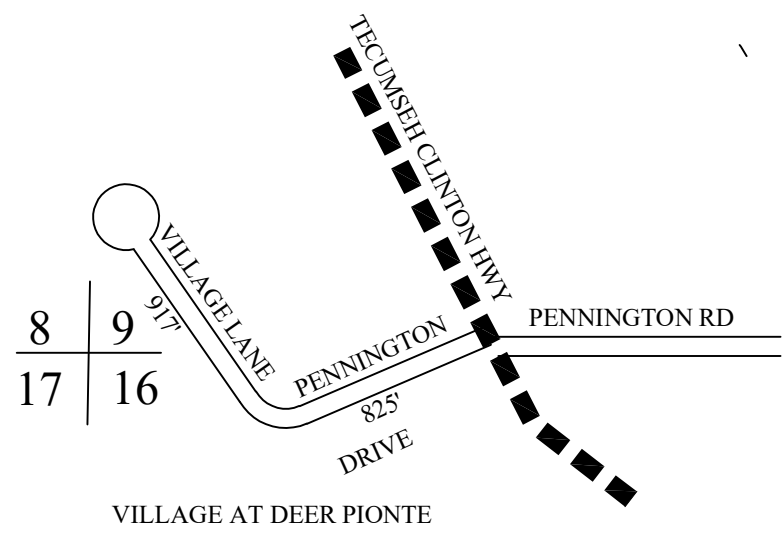
8 | 9
17 | 18

SOUTH 1/4 COR.
SEC. 9

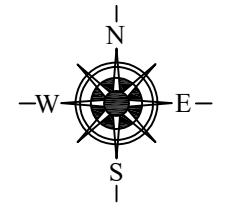
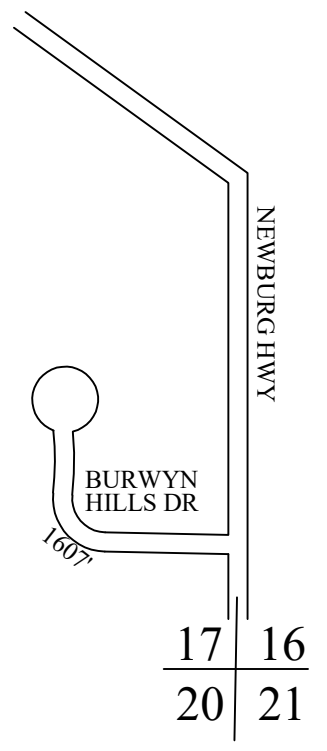
TOWNSHIP CLINTON
SECTION 9 T 5S R 4E
COUNTY LENAWEE 46

SHEET 29

- COUNTY LINE
- CORPORATE LIMITS
- STATE TRUNKLINE
- COUNTY PRIMARY
- COUNTY LOCAL
- AJACENT COUNTY
- CITY OR VILLAGE STREETS



TOTAL FEET 3,349 EQUALS 0.63 MILES



TOWNSHIP CLINTON
 SECTION 9, 16 & 17 T 5S R 4E
 COUNTY LENAWEE 46

SHEET 30