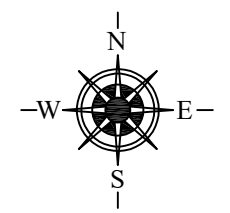


- COUNTY LINE
- CORPORATE LIMITS
- STATE TRUNKLINE
- COUNTY PRIMARY
- COUNTY LOCAL
- AJACENT COUNTY
- CITY OR VILLAGE STREETS

PRIMARY ROAD SYSTEM IS **30.76** MILES
 LOCAL ROAD SYSTEM IS **44.81** MILES

PALMYRA TWP

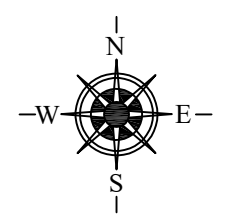
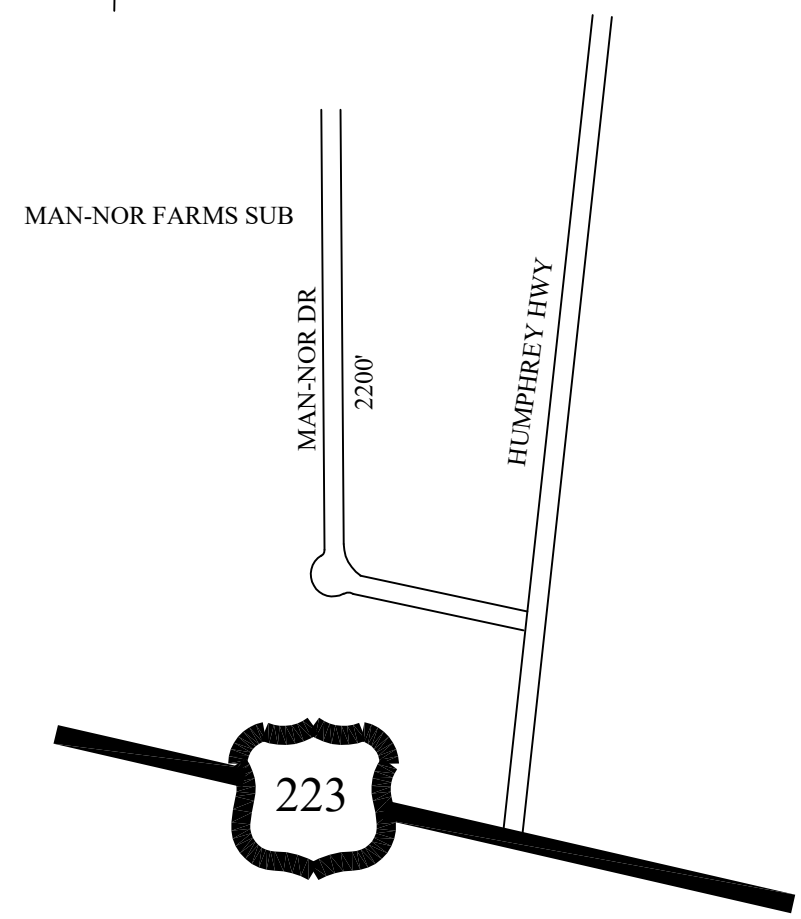


- COUNTY LINE
- CORPORATE LIMITS
- STATE TRUNKLINE
- COUNTY PRIMARY
- COUNTY LOCAL
- AJACENT COUNTY
- CITY OR VILLAGE STREETS

7 | 8
18 | 17

8 | 9
17 | 16

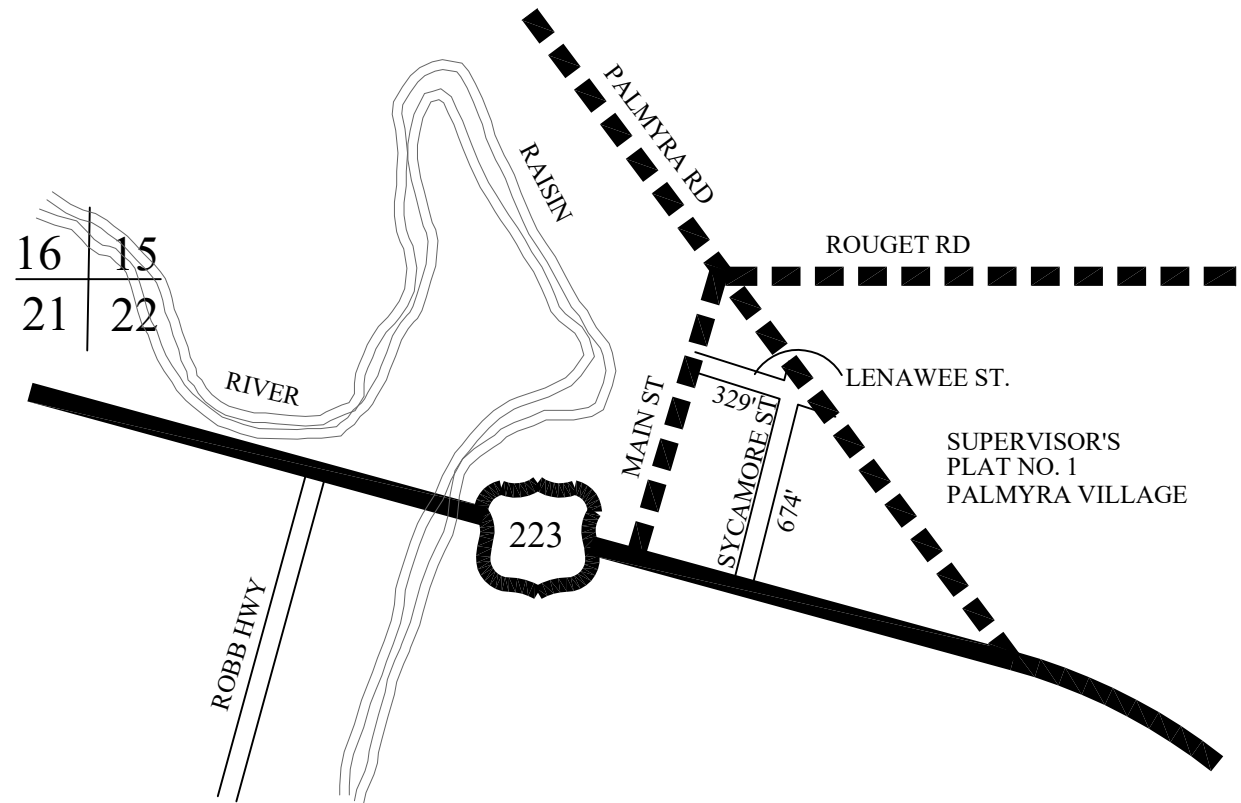
TOTAL FEET 2200' EQUALS 0.42 MILES



TOWNSHIP PALMYRA
 SECTION 17 T 7S R 4E
 COUNTY LENAWEE 46

SHEET 84

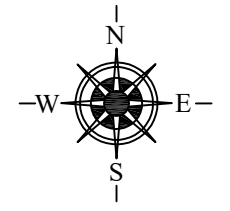
- COUNTY LINE
- CORPORATE LIMITS
- STATE TRUNKLINE
- COUNTY PRIMARY
- COUNTY LOCAL
- AJACENT COUNTY
- CITY OR VILLAGE STREETS



TOTAL FEET 1003' EQUALS 0.19 MILES

16	15
21	22

15	14
22	23



TOWNSHIP PALMYRA
 SECTION 22 T 7S R 4E
 COUNTY LENAWEE 46

SHEET 85